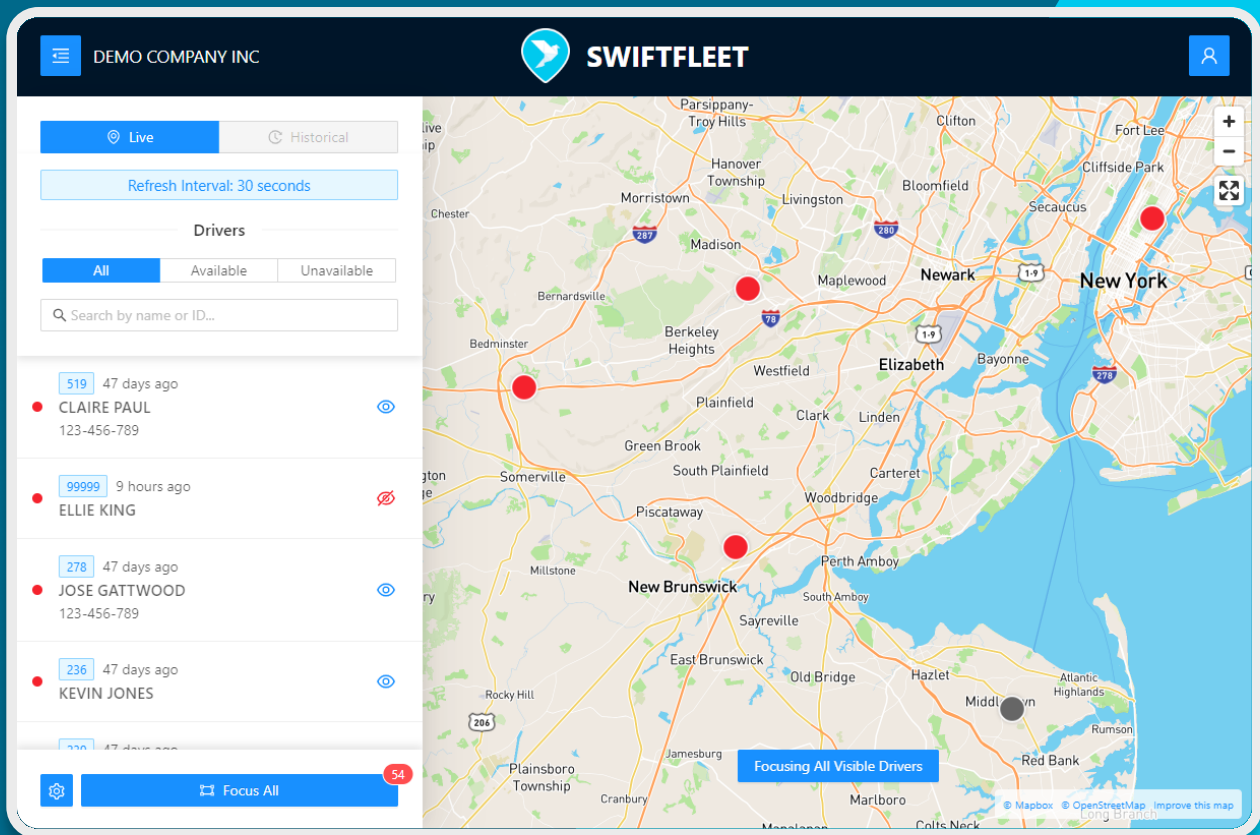




SwiftFleet Live








An elegant **fleet tracking** service
at your fingertips

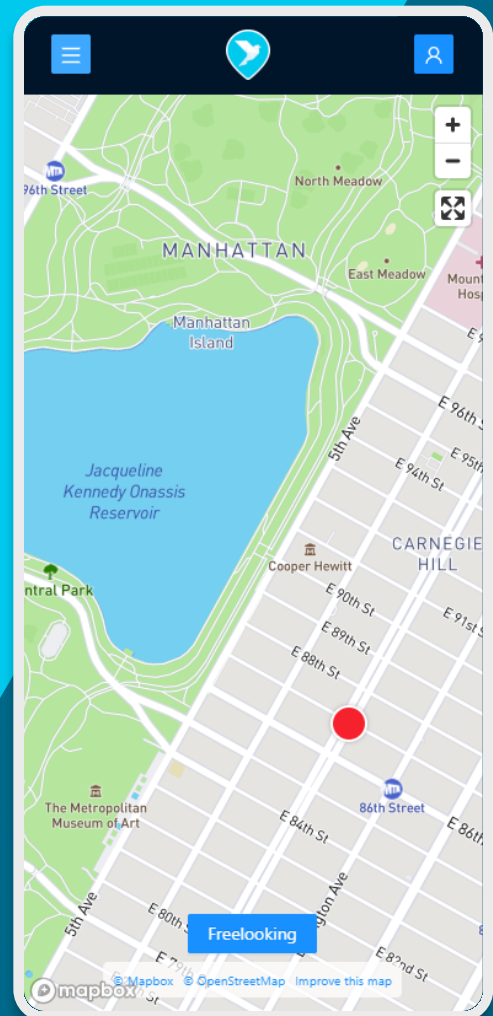
SwiftFleet is a web console application that provides you with up to date information about your drivers' availability and whereabouts.



Why Choose SwiftFleet Live?

Equip your dispatchers with all the tools necessary to get the job done.

-  **Fleet Tracking**
-  **Single & Multi-Driver Focus**
-  **Search & Filter Drivers**
-  **Toggle Driver Visibility**
-  **Automatic Refresh**
-  **Mobile Friendly**
-  **Beautiful Design**



Details

Login

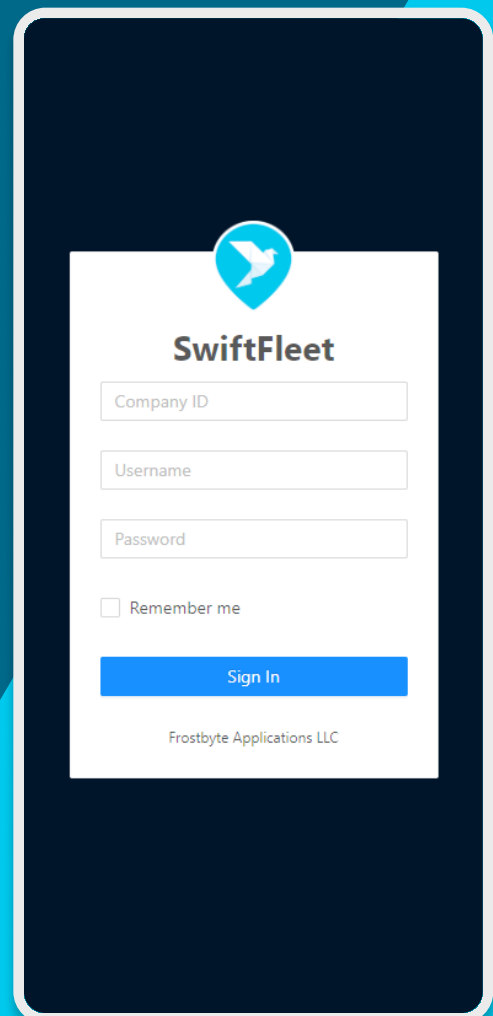
The login screen is where the user enters their company credentials in order to log into the SwiftFleet application. Users will need three pieces of information in order to log into the application.

Company ID

The unique identifier for your company's program.

Username & Password

The credentials that the user uses to log into SwiftFleet.

A screenshot of the SwiftFleet login screen. The screen is white with a dark blue header containing the SwiftFleet logo (a white bird in flight inside a blue circle) and the text "SwiftFleet". Below the header are three input fields: "Company ID", "Username", and "Password". Below the input fields is a checkbox labeled "Remember me". At the bottom of the form is a blue button labeled "Sign In". Below the button is the text "Frostbyte Applications LLC".

SwiftFleet

Company ID

Username

Password

Remember me

Sign In

Frostbyte Applications LLC



Details, Cont.

Map

Profile Button

View account information and logout.

Sidebar Button

Opens and closes the side-bar menu

Map Controls





Allows for zooming in and out of the map, as well as entering a fullscreen mode.

Driver Popup

A popup that displays driver metadata. Data is configurable in the settings menu.

Driver Pin

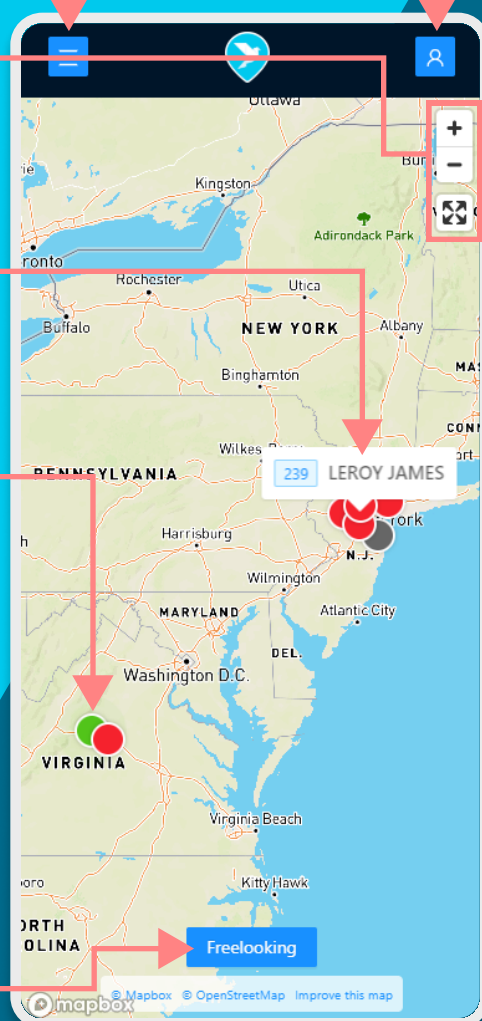
Displays the location of a given driver. The pin's color changes to reflect various driver states.

-  Location is recent and driver is available
-  Location is old and driver is available
-  Location has expired and driver is available
-  Driver is unavailable

Focus Mode

Displays the current focus mode...

- Focusing a single driver
- Focusing all visible drivers
- Freeloading



Details, Cont.

Live Sidebar

Refresh Interval

This is how often the location data is updated.

Category Filter

This allows you to filter by various driver states.

Search Bar

Allows you to filter the driver list by name or driver ID.

Driver Entry

Displays the metadata for a single driver, allowing you to toggle their visibility on the map.

- Driver ID
- Location Timestamp
- Phone Number
- Status

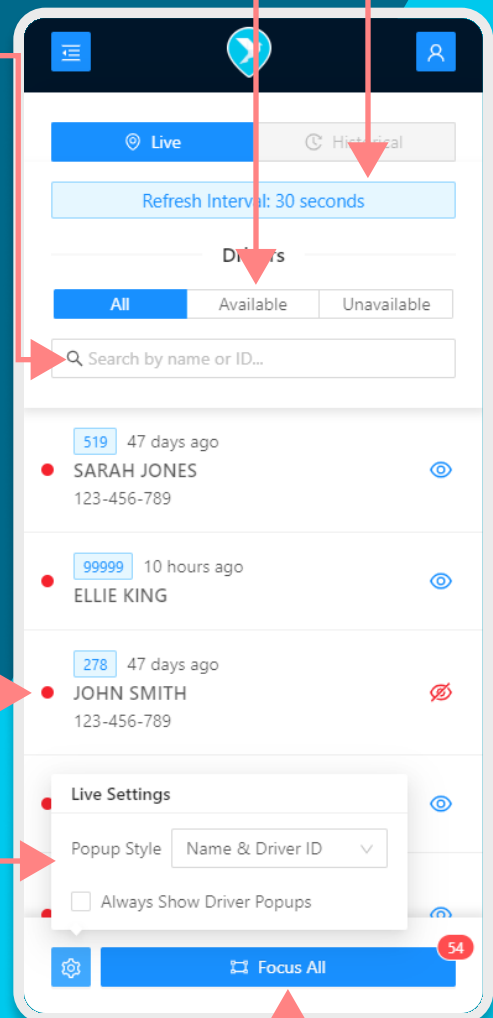
Settings

Allows you to adjust the live map settings.

- Adjust the metadata displayed on popups
- Toggle popups to show all the time.

Focus Buttons

Clicking this button will focus all the drivers currently visible in the list.



Pricing

No-nonsense pricing.

Basic

\$20

per month*

Free Install
1-8 users
Basic support
Feature requests**

Standard

\$32

per month*

Free Install
9-16 users
Basic support
Feature requests**

Business

\$42

per month*

Free Install
17-24 users
Priority support
Feature requests**

Enterprise

Call for Pricing

Free Install
25+ users
Priority support
Feature requests**

*Pricing subject to change

**Feature requests do not guarantee implementation.

